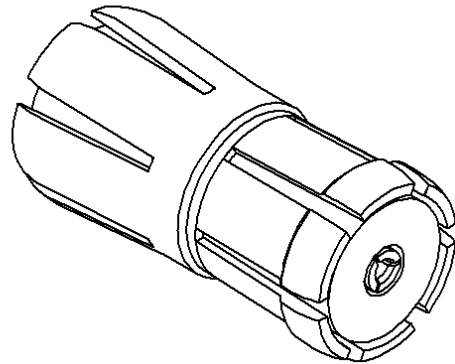
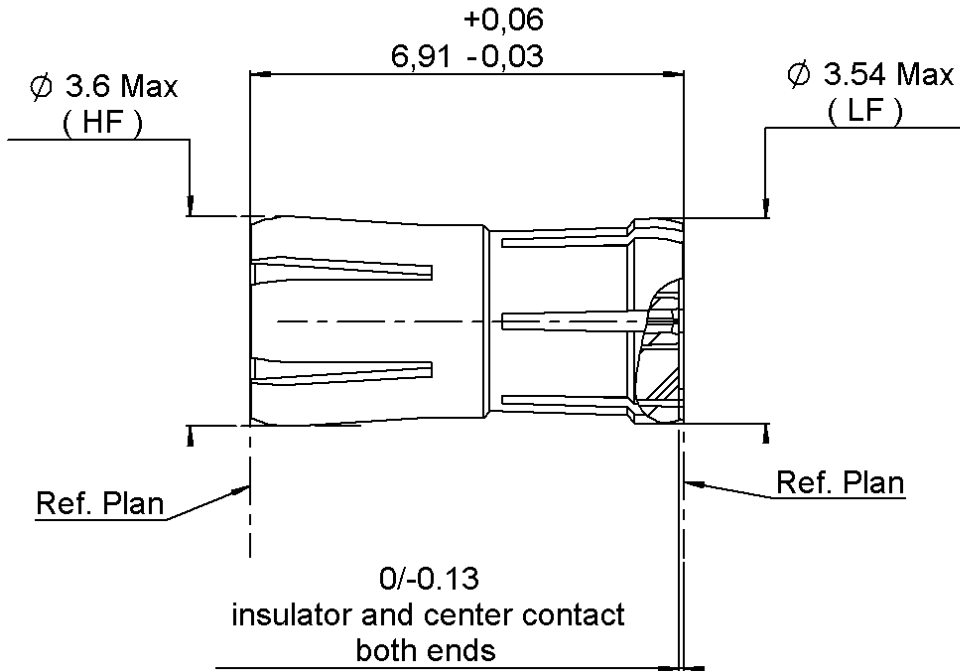



FEMALE - FEMALE ADAPTER

R221.703.100

PACKAGING PER 140

Series : SBMS




Scale : 1/1

All dimensions are in mm.

COMPONENTS	MATERIALS	PLATING (μm)
BODY	BERYLLIUM COPPER	GOLD 1.3 OVER COPPER 2.5
CENTER CONTACT	BERYLLIUM COPPER	GOLD 1.3 OVER NICKEL 2.5
OUTER CONTACT	-	-
INSULATOR	PTFE	-
GASKET	-	-
OTHERS PARTS	-	-
-	-	-
-	-	-

Issue : 0815 A

In the effort to improve our products, we reserve the right to make changes judged to be necessary.



FEMALE - FEMALE ADAPTER

R221.703.100

PACKAGING PER 140

Series : SBMS

PACKAGING

SPECIFICATION

Standard	Unit	Other
140	'W' option	Contact us

ELECTRICAL CHARACTERISTICS

ENVIRONMENTAL

Impedance **50** Ω
 Frequency **8.5-11.5** GHz
 VSWR **1.10 + 0,0300** x F(GHz) Maxi
 Insertion loss **0.5** dB Maxi
 RF leakage - (**40**) dB Maxi
 Voltage rating **250** Veff Maxi
 Dielectric withstanding voltage **500** Veff mini
 Insulation resistance **1000** MΩ mini

Operating temperature **-65/+125** ° C
 Hermetic seal **NA** Atm.cm3/s
 Panel leakage **NA**

OTHER CHARACTERISTICS

Assembly instruction **NA**

Others :
 Guaranteed the performance until
 0.25 maxi misalignment

MECHANICAL CHARACTERISTICS

Center contact retention
 Axial force – Mating end **6.7** N mini
 Axial force – Opposite end **6.7** N mini
 Torque **NA** N.cm mini

Recommended torque
 Mating **NA** N.cm
 Panel nut **NA** N.cm

Mating life **500** Cycles mini
 Weight **0,2000** g

	Low Force (LF)			High Force (HF)		
	mini	Medium	Maxi	mini	Medium	Maxi
Separation	0.4 N	<i>1.5 N</i>	3 N	3.5N	7 N	12 N
Engagement	0.5 N	<i>2 N</i>	4 N	5 N	<i>9.5 N</i>	17.5 N

Issue : 0815 A

In the effort to improve our products, we reserve the right to make changes judged to be necessary.



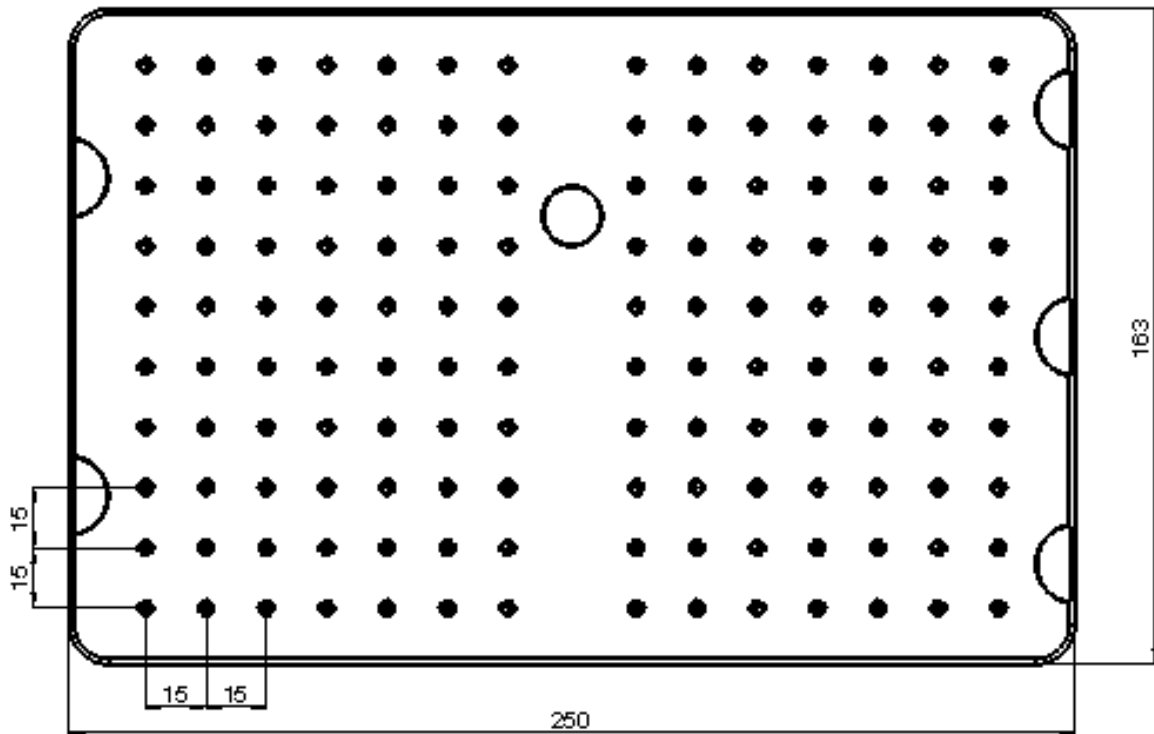
FEMALE - FEMALE ADAPTER

R221.703.100

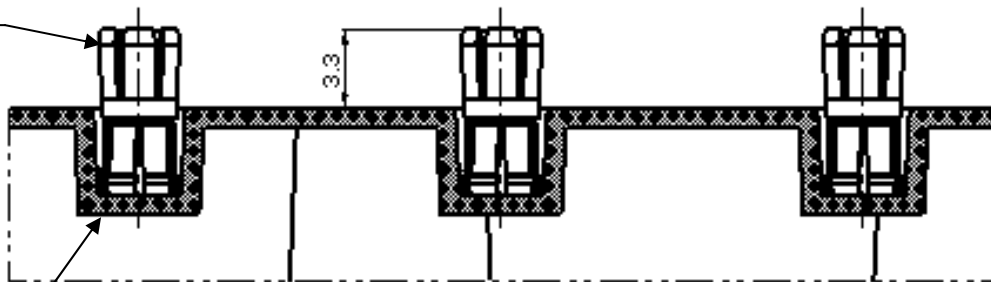
PACKAGING PER 140

Series : SBMS

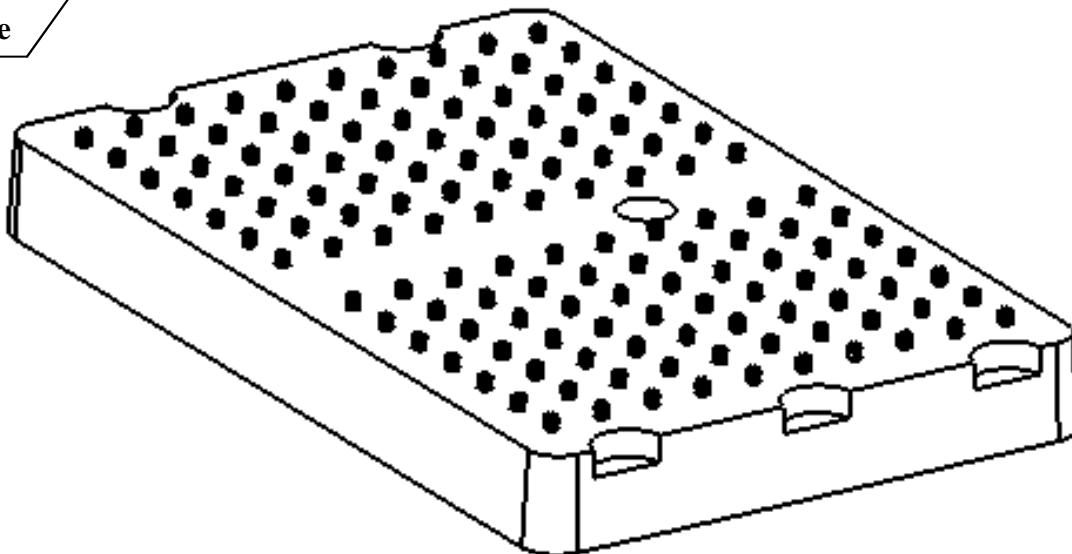
TRAY 140 INTERSTICES



High_force



Low_force



Issue : 0815 A

In the effort to improve our products, we reserve the right to make changes judged to be necessary.



RADIALL®